

# Cosmos / Kabar

Cosmos Electronic Machine Corporation  
Kabar Manufacturing Corporation

Phone: 631-694-6857

Fax: 631-694-6846

E-mail: info@cosmos-kabar.com

www.cosmos-kabar.com

## PATENTED CLOSED-LOOP PROCESS CONTROLLED SEALING EQUIPMENT

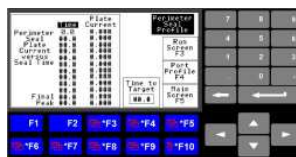


- The Programmable Logic Controller (PLC) controls the operating parameters of shuttles, turntables and indexers.
- The Patented power control is based on a PLC platform. It automatically controls the RF sealing power through the closed loop algorithm .
- Diagnostic messaging aids in troubleshooting the equipment.
- One PLC can support multiple generators, as well as an entire production line.
- Human Machine Interface (HMI) provides displayed information such as production data, process parameters, sealing and plate current parameters.
- Data entry for operation parameters is accessible via monochrome or color touch screens.
- Batch recipes for multiple product parameters can be saved and edited in the PLC through the HMI.

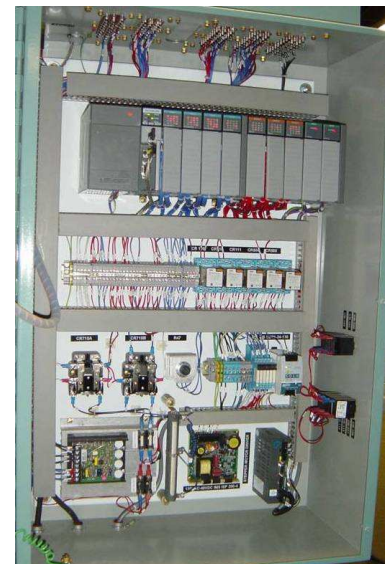
- Displays operating plate current and time profiles.
- Plate current history of last 10 shots are displayed.
- Optional download capability to a data acquisition system
- Sensitive parameters can be secured through multi-level passwords.
- Real time alarm pop-up banners provide fault, error and trouble shooting information on the HMI.
- In-house programming allows complete customization to fit your requirements.
- Graphical display is optional.
- All control parameters can be uploaded to a pc as input to a spreadsheet based on program



Allen-Bradley HMI



Typical Plate Current Profile Screen



Typical PLC enclosure

www.cosmos-kabar.com



The Largest U.S. Manufacturers  
of RF Heat Sealing Equipment



140 Schmitt Blvd Farmingdale NY 11735

